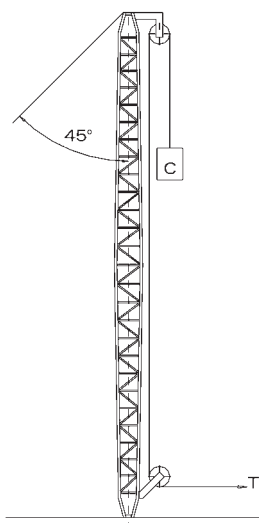
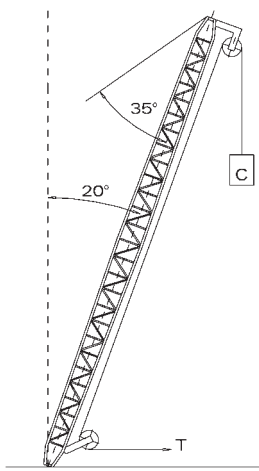


TABLE 2
LIGHT ALUMINIUM ALLOY DERRICKS (Mod. FAL)

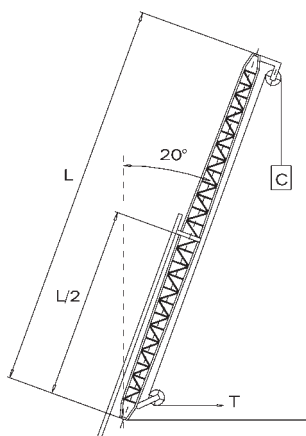
Model	Total capacity [kN]			Total length [m]	Section length [m]	Mass [kg]
	Pos. E 0°	Pos. F 20°	Pos. G 20°			
FAL 001	13	10	3	8	4+4	40
FAL 010	13	10	3	12	4+4+4	65
FAL 020	20	16	4	8	4+4	45
FAL 030	20	16	4	10	4+2+4	60
FAL 040	20	16	4	12	4+4+4	70
FAL 050	25	20	5	8	3+2+3	50
FAL 060	25	20	5	12	4+4+4	80
FAL 070	25	20	5	16	5+6+5	110
FAL 080	38	30	7	12	4+4+4	100
FAL 090	38	30	7	16	5+6+5	130
FAL 100	38	30	7	18	6+6+6	180
FAL 110	38	30	7	20	5+5+5+5	200
FAL 120	50	40	8	12	4+4+4	120
FAL 130	50	40	8	16	4+4+4+4	160
FAL 140	50	40	8	20	5+5+5+5	220
FAL 150	62	50	10	12	6+6	150
FAL 160	62	50	10	16	5+6+5	200
FAL 170	62	50	10	18	6+6+6	230
FAL 180	62	50	10	20	5+5+5+5	250
FAL 190	100	80	16	16	5+6+5	300
FAL 200	100	80	16	18	6+6+6	330
FAL 210	100	80	16	22	5+6+6+5	400



Pos. E



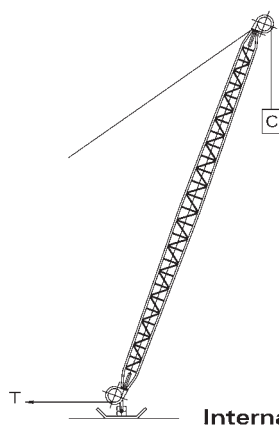
Pos. F



Pos. G

TABLE 3
STEEL DERRICKS (Mod. FAA)

Model	Total capacity [kN]			Total length [m]	Section length [m]	Mass [kg]
	Pos. E 0°	Pos. F 20°	Pos. G 20°			
FAA 220	13	10	3	8	4+4	90
FAA 230	25	20	5	12	4+4+4	110
FAA 240	25	20	5	16	5+6+5	160
FAA 250	38	30	7	12	4+4+4	150
FAA 260	38	30	7	16	5+6+5	205
FAA 270	38	30	7	18	6+6+6	230
FAA 280	62	50	10	16	5+6+5	240
FAA 290	62	50	10	18	6+6+6	280



Internal rope passage